

# 750 Watt DBS-Band Rack Mount High Power Amplifier



## FEATURES

- *CW or peak TWT available*
- *Touch screen interface*
- *Compact 4RU chassis*
- *Built-in redundancy controller*
- *Ethernet interface, remote diagnostics*
- *Parameter trend analysis*
- *Optional integrated linearizer*

The **XTRT-750DBS** is a highly efficient rack mountable traveling wave tube amplifier (TWTA) designed for fixed and mobile uplink applications. The unit includes RF gain control, a solid state pre-amplifier, RF filters, cooling, and monitoring and control (M&C) systems. Rack space is conserved because the amplifier occupies only 4 rack units (7 inches) of a standard 19 inch rack cabinet. Nominal weight is 75 pounds.

The **XTRT-750DBS** is a 750W DBS-band amplifier with a touch screen front panel for easy customer interface. The display shows HPA status, parameter trend analysis and event logs, and remote diagnostics can be easily performed via the Ethernet interface. Also, because the display can show and control waveguide switches or a combiner, the need for separate external controllers is eliminated for common architectures.

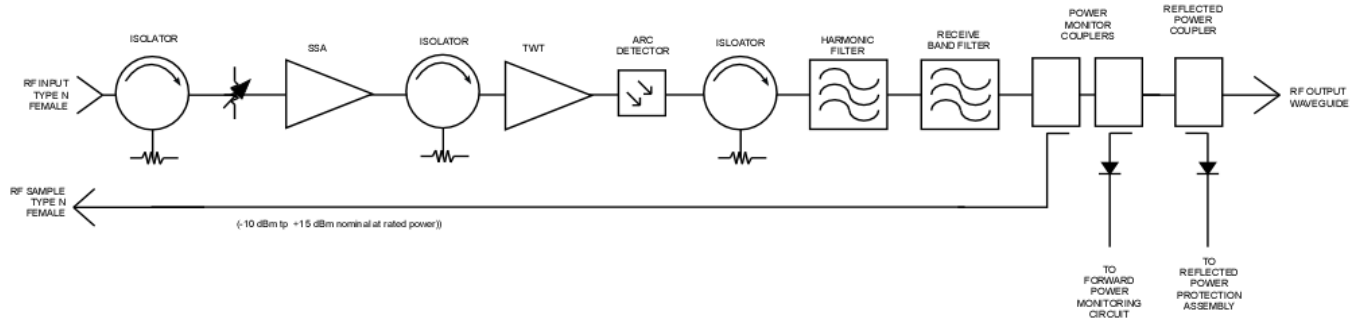
The **XTRT-750DBS** incorporates high efficiency, dual stage collector TWTs. Reliability is enhanced because both prime power consumption and internal operating temperatures are reduced for both the linear and saturated modes of operation. Depending upon user requirements these amplifiers can be configured for either single thread or redundant system operation.



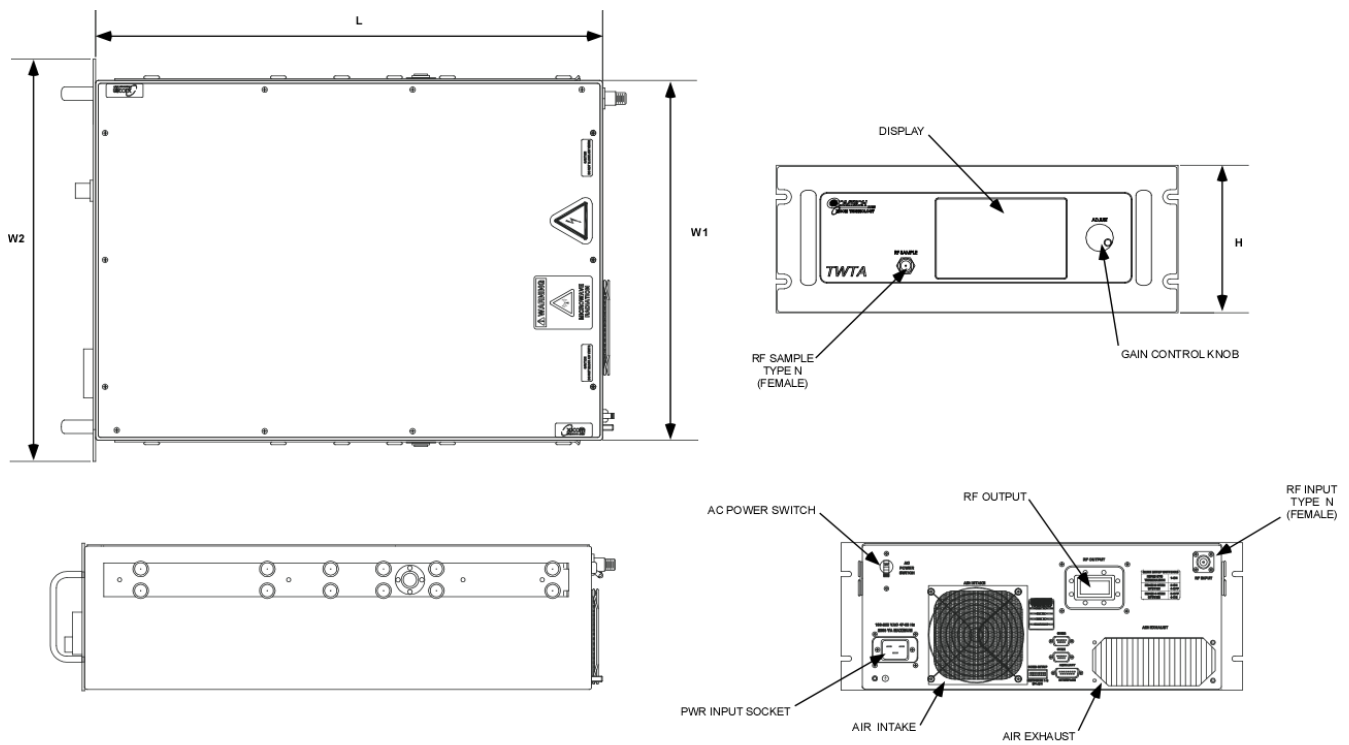
# PERFORMANCE SPECIFICATION

Parameters	XTRT-750DBSHE	XTRT-750DBS
FREQUENCY RANGE (extended frequency coverage available)	17.3 to 18.1 GHz	
OUTPUT POWER		
Traveling Wave Tube	750 W Peak	750 W CW
Rated Power @ Amplifier Flange (minimum)	400 W	650 W
GAIN		
Large Signal (minimum)	65 dB	
Small Signal (minimum)	70 dB	
Attenuator Range (continuous)	25 dB	
Maximum SSG Variation Over:		
Any Narrow Band	1.0 dB per 80 MHz	
Full Band	4.0 dB	
Slope (maximum)	± 0.04 dB/MHz	
Stability, 24 hr. (maximum)	± 0.25 dB	
Stability, Temperature (maximum)	± 1.0 dB over temperature range at any frequency	
INTERMODULATION (maximum) with two equal carriers	-18 dBc @ 260 W total output power	
HARMONIC OUTPUT (maximum)	-60 dBc	
AM/PM CONVERSION (maximum)	3.0 deg/dB at 6 dB below rated power	
NOISE POWER (maximum)		
Transmit Band	-70 dBW/4 kHz	
Receive Band	-150 dBW/4 kHz 10.95 to 12.75 GHz	
GROUP DELAY (maximum)		
Bandwidth	Any 80 MHz	
Linear	0.01 nS/MHz	
Parabolic	0.005 nS/MHz <sup>2</sup>	
Ripple	0.5 nS/Pk-Pk	
RESIDUAL AM NOISE (maximum)	-50 dBc to 10 kHz -20 (1.5 + logf) dBc 10 to 500 kHz -85 dBc above 500 kHz	
PHASE NOISE (maximum)	12 dB below IESS phase noise profile AC fundamental -50 dBc Sum of all spurs -47 dBc	
VSWR		
Input (maximum)	1.3:1	
Output (maximum)	1.3:1	

# BLOCK DIAGRAM



# OUTLINE DRAWING



RF OUTPUT:	WR-62
Nominal Weight: 75 lbs (34.02 kg)	

DIMENSIONS		
	INCHES	CENTIMETERS
W1	17.00	43.18
W2	19.00	48.26
L	24.00	60.96
H	6.97	17.70

## PRIME POWER

180 to 260 VAC  
 47 to 63 Hz, Single Phase  
 2000 VA Typical (XTRT-750DBSHE)  
 2300 VA Typical (XTRT-750DBS)  
 0.95 Minimum Prime Power Factor



## ENVIRONMENT

NONOPERATING TEMPERATURE RANGE	-50°C to +70°C
OPERATING TEMPERATURE RANGE	-10°C to +50°C maximum (2°C/1000 Feet Derating)
HUMIDITY	Up to 95% Noncondensing
ALTITUDE	10,000 Feet MSL (maximum)
SHOCK AND VIBRATION	Normal Transportation
COOLING	Forced Air 200 CFM (typical)

## INTERFACE

	Type	Function	
CONTROLS	LOCAL	Local/Remote	AC Power On/OFF
	LOCAL AND REMOTE	Gain	High Voltage ON/OFF
		Min/Max Power Alarm/Fault	Audio Alarm ON/OFF
		Reflected Power Alarm/Fault	Units (Watts, dBm, dBW)
		Fault Reset	Lamp Test
	Heater Standby ON/OFF	System	
STATUS	FRONT PANEL LCD	Standby	Power
		Local	Remote
		Summary Fault	High Voltage ON/OFF
		Heater Time Out (FTD)	Heater Standby
		Power Out	Beam Hours
		Reflected Power	Helix Current
		TWT Temperature	Helix Voltage
		Heater Hours	Faults:
		Uplink Power (option)	High VSWR
		Event Log	High Voltage
	Trend Log	Helix Current	
	System Status	TWT Temperature	
	DRY FORM-C RELAY CONTACTS (2)	Summary Fault	
COMPUTER SERIAL PORT	HARDWARE INTERFACE	Two Ports: RS-232 & RS-422/RS-485 Ethernet T10/100	
	XICOM COMMAND SET	ASCII Commands	
	RF SAMPLE PORT COUPLING	-37 dB Nominal	

## OPTIONS

- Extended Frequency Coverage
- 1:1, 1:2, 1:N Redundancy
- Uplink Power Control
- Variable Phase Combined
- Integrated Linearizer
- Integrated Block Upconverter

## Headquarters

Comtech Xicom Technology, Inc.  
 3550 Bassett Street  
 Santa Clara, CA 95054  
 USA

Phone: +1-408-213-3000

Fax: +1-408-213-3001

email: [sales@xicomtech.com](mailto:sales@xicomtech.com)

Web: [www.xicomtech.com](http://www.xicomtech.com)

## Europe Sales Office

Comtech Xicom Technology Europe, LTD  
 4 Portland Business Center  
 Manor House Lane  
 Datchet  
 Berkshire SL3 9EG  
 United Kingdom

Phone: +011 44 (0) 1753 549 999

Fax: +011 44 (0) 1753 549 997

email: [sales@xicomeurope.com](mailto:sales@xicomeurope.com)

Web: [www.xicomtech.com](http://www.xicomtech.com)

## Asia Sales Office

Comtech Xicom Technology  
 150 Cecil Street  
 #08-02  
 Singapore 069543

Phone: +011 65 6325 1953

Fax: +011 65 6325 1950

email: [asiasales@xicomtech.com](mailto:asiasales@xicomtech.com)

Web: [www.xicomtech.com](http://www.xicomtech.com)

